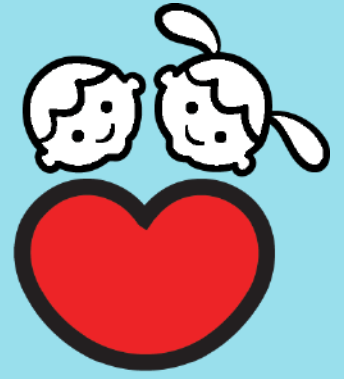


BIG HEART STUDENT CARE

@ Fuchun Primary School

DECEMBER 2021



BIG HEART
STUDENT CARE



Inspiring Minds. Touching Hearts.





BIG HEART
STUDENT CARE

MESSAGE FROM GENERAL MANAGER

Dear Ms Lee,

On behalf of Big Heart Student Care, I would like to express my deepest gratitude and appreciation to you and your team for your unwavering support towards Big Heart SCC @ Fuchun Primary School.

Big Heart SCC @ Fuchun was part of the earliest batch of centres that were established in 2016. Over the last 6 years, we are pleased to have reached out to students through the various programmes we have and this would not have been achieved without our synergistic partnership.

Our various programme at Big Heart SCC aims to inculcate values, enable meaningful interactions and create opportunities for students to put skills and knowledge into practice. Big Heart serves a student-centric curriculum with a strong focus on character building and includes learning pillars such as Values & Virtues, Love 2 Read, Stem It Up!, Global Citizen, Health & Fitness and ImagineArt.

With safe management measures and other restrictions in place, our SCC team has diligently worked at ensuring that the daily operations and programmes continues to run smoothly despite curtailed outdoor programmes and disruptions to learning journeys and external programmes. We started exploring online programmes to ensure that students continue to have inclusive and enriching learning experiences with us. As the country moves back into normalcy, we hope to be able to reintroduce more outdoor activities and external programmes in the SCC.

We look forward to deepening our partnership with you to fulfil our vision of Inspiring Minds, Touching Hearts. Big Heart SCC @ Fuchun will continue to work closely with your team to provide opportunities to students of all backgrounds, promote social mobility and make a difference to our community.

Herewith, we are pleased to share with you a consolidation of some key highlights for Big Heart Student Care @ Fuchun.

Warmest regards,

Veronica Xiong
General Manager
Self Help Groups Student Care Ltd



ABOUT BIG HEART @ FUCHUN

2016

YEAR THAT BIG
HEART SCC WAS SET
UP AT FUCHUN
PRIMARY SCHOOL

104

NO. OF STUDENTS
ENROLLED FOR
JAN 2022

45%

% OF STUDENTS
RECEIVING SCFA*

**Does not include Jan 2022 SCFA applications*



103

**No. of students
enrolled in BHSCC
@ Fuchun Pri in
Oct 2021**



**BIG HEART
STUDENT CARE**



84%

**% of parent
surveys received**

PARENT SURVEY RESULTS 2021 BIG HEART @ FUCHUN

100%

**AGREE THAT SCC PROVIDES A CONDUCTIVE AND
SAFE LEARNING ENVIRONMENT FOR THEIR
CHILDREN.**

98%

**AGREE THAT STAFF ARE APPROACHABLE AND
ATTENTIVE TO CHILD'S NEEDS.**

100%

**AGREE THAT SCC HAS A HOLISTIC PROGRAMME
THAT KEEPS STUDENTS MEANINGFULLY ENGAGED**

99%

**AGREE THAT THEIR CHILDREN LOOK FORWARD TO
ATTENDING SCC.**

100%

**AGREE THAT SCC STAFF ARE ABLE TO SUPERVISE
THEIR CHILD'S HOMEWORK EFFICIENTLY.**

100%

**WILL RECOMMEND THIS SCC TO PARENTS OF OTHER
SCHOOL CHILDREN**



BIG HEART
STUDENT CARE

BIG HEART PROGRAMMES

BIG HEART PROGRAMMES

At Big Heart Student Care, we endeavour to conduct enriching programmes for all students. In view of our 5 year milestone, we recently revamped our curriculum framework to include new components and to ensure that our programmes remain engaging and meaningful for our students.

Our new curriculum focuses on 6 main curriculum pillars as follows:



VALUES & VIRTUES

► I am an Ethical Person.

Character Building programme.



LOVE 2 READ

► I Read to Succeed.

A programme to build a love for reading.



STEM IT UP!

► I am an Inquisitive Explorer.

Learning concepts of Science, Technology, Engineering & Maths.



GLOBAL CITIZEN

► I am a Global Citizen.

Current affairs programme.



HEALTH & FITNESS

► I lead a Healthy Lifestyle.

Mental & Physical Health programme.



IMAGINEART

► I am a Creative Learner.

Creative Skills Development programme



PARTNERSHIP PROGRAMMES: BIG HEART SCC @ FUCHUN

Big Heart Student Care actively looks out for programme partners who are able to bring in enriching programmes for our students. To date, Big Heart has worked with over 60 community and corporate partners who sponsor additional programmes, resources and materials for our students. All programmes are offered to students at no additional cost.

The Covid-19 pandemic largely affected the number of programmes that we were able to bring in. This year, we explored the possibility of running partnership programmes virtually.

Here are the various partnership programmes that we have conducted at Big Heart Student Care @ Fuchun Primary School.



21

different partnership programmes were conducted for students at Big Heart Student Care @ Fuchun Primary School since 2016

For Year 2016

- A Walk to Remember Heritage Programme
(Youth Corps Singapore)
- DIYREAD Community Programme
(National Library Board)



A Walk To Remember
Youth Corps Singapore

For Year 2017

- 3D Cultural Masks Programme
(National Arts Council)
- Green Champs Programme
(Youth Corps Singapore)
- Read, Swap, Share & Read, Reap, Write
(National Library Board)



3D Cultural Masks Programme
National Arts Council



BIG HEART
STUDENT CARE

BIG HEART PARTNERSHIP PROGRAMMES

For Year 2018

- Hip Hop Dance Programme
(National Arts Council)
- Sungei Buloh Nature Explorers Programme
(Youth Corps Singapore)
- Online: Brainy Arkies Maths Programme
(Times Publishing)
- Race to Praise Children's Day Programme
(Focus on The Family Singapore)
- Wishlist Grant a Wish Programme
(National Heritage Board)



*Hip Hop Dance Programme
National Arts Council*

For Year 2019

- Create & Stage Drama Programme
(National Arts Council)
- Stationery sets for Back To School
(MBRACE & Staedtler)
- Bee Bob Imagination Land Art Tour
(Ho Bee Land)
- Online: Brainy Arkies Maths Programme
(Times Publishing)
- Race to Praise Children's Day Programme
(Focus on The Family Singapore)
- Mother's Day Programme
(Focus on The Family Singapore)



*Imagination Land Art Programme
Ho Bee Land*

For Year 2020

- Seed Kindness Programme
(Singapore Kindness Movement)
- Thank You Essential Workers
(MBRACE)
- HDB Community Painting Art Cards
(HDB & ArtBeatz)
- Online: KidsFun Online Crafts & Games
(Youth Corps Singapore)
- Online: Brainy Arkies Maths Programme
(Times Publishing)



*Community Painting Art Cards
HDB & ArtBeatz*

- Race to Praise Children's Day Programme
(Focus on The Family Singapore)
- Mothers Day Programme
(Focus on The Family Singapore)



*The Army Experience
CDAC & Singapore Discovery Centre*

For Year 2021

- Online - Fusion Ethnic Dance Programme
(National Arts Council)
- Kindness Mission Programme
(Singapore Kindness Movement)
- Online: HeritageCares: VTVCH Virtual Tour Programme
(National Heritage Board)
- Race to Praise Children's Day Programme
(Focus on The Family Singapore)
- Mothers Day Programme
(Focus on The Family Singapore)



*Imagination Land Art Programme
Ho Bee Land*



SUPPORT FROM THE SELF HELP GROUPS: BIG HEART SCC @ FUCHUN

Big Heart Student Care is able to harness the resources of the four Self Help Groups (SHG) to provide support and assistance to families in need. The four main forms of support provided are the SHG plug in programmes, Programme Fee Subsidy (PFS), Family Referrals and Parent Engagement Sessions.

1. SHG PLUG IN PROGRAMMES

SHGs provide additional learning support programmes for students who receive the ComCare Student Care Fee Assistance (SCFA). Students who are enrolled into the programme can attend programmes ranging from homework coaching, learning support programmes as well as additional enrichment programmes and learning journeys.

The Self Help Groups offered the following programmes to eligible students in Big Heart SCC @ Fuchun.

Programme	Period of:	Frequency	No. of Beneficiaries:
Enrichment: A Day in Nature @ Gardens by The Bay	Sep-16	1 Session x 4 Hrs	30
Enrichment: The Army Experience @ Singapore Discovery Centre	2017	1 Session x 4 Hrs	30
CDAC GRASP Programme	2019	Once a week x 1.5 Hrs	17
CDAC GRASP Programme	2020*	Once a week x 1.5 Hrs	*Suspended due to Covid-19 Measures
CDAC GRASP Programme	2021*	Once a week x 1.5 Hrs	

2. SHG PROGRAMME FEE SUBSIDY (PFS)

In 2017, SHGs rolled out the PFS scheme, to provide enhanced subsidies for students who receive the ComCare Student Care Fee Assistance (SCFA). The additional subsidies, on top of SCFA, covers other out-of-pocket expenses related to student care services.

Students can receive upto \$419 of subsidies in a year to help defray expenses related to Full Day Programme Fees, Holiday Enrichment Fees, Learning Journey Fees and 2 free sets of Big Heart T-shirts (for FAS students)

The PFS grant amount is tiered according to student's SCFA tier, with students who are under FAS and/or LOR, receiving 100% subsidies.



Up to 98%

of SCFA students at Big Heart SCC @ Fuchun have benefited from this scheme every year.

3. SHG FAMILY REFERRAL PROGRAMME

Big Heart Student Care is able to directly refer families in need of additional support, to the respective SHGs. A caseworker from the SHGs will then assess the family's needs in a holistic approach and arrange for the necessary support for the family.

Upon assessment, families may receive support in the form of financial assistance, financial counselling, grocery vouchers, utilities vouchers, Back to School vouchers or job seeking advice and referrals.



6

families from Big Heart SCC @ Fuchun have been successfully referred to SHGs for additional support.

4. PARENT ENGAGEMENT SESSIONS

SHGs offer parent engagement sessions in the form of workshops and talks. These sessions are open to all parents in SCC and school. Since 2020, the workshops have been conducted online and are provided at no cost.

Workshops range from parenting to family management topics such as 'Disciplining and Managing Children', 'Supporting Children's learning styles' and 'Effective Communication at Home.'



35

SHG online Parent Engagement sessions offered to parents since 2020.

WHO WE ARE

The four Self Help Groups set up a Joint Venture Company (Self Help Groups Student Care Limited) to collaborate with the MOE to operate 30 School-based Student Care Centres. We serve to provide a safe and conducive after-school care service for student and complement MOE in providing educational and developmental support to the students. Big Heart also serves to reach out to needy students and their families to provide holistic and family- centric assistances.

MISSION

To provide quality and affordable after-school care services to support the holistic development of our students through a professional, committed and compassionate team, in partnership with parents, schools and the community.

VISION

Inspiring Minds,
Touching Hearts

VALUES

I - INTEGRITY
C - COMPASSION
A - ADAPTABILITY
R - RESPONSIBILITY
E - EXCELLENCE

OUR LOCATIONS



OUR OUTREACH



30

No. of Big Heart Student Care Centres islandwide



Over 4,200

No. of students enrolled in Big Heart Student Care Centres as of Dec 2021

